

H. O. CO. ACREAGE 659 SUB NO. H. T. & B. Sec. 16 SURVEY San Augustine COUNTY, ABSTRACT NO. 558

Acreage found 669 Patentee Estimated by C. P. Dumphy Date October 8-9, 1910  
 Timber Rights Expire Mineral Rights Expire H. O. Co. Represented by  
 Encroachments, Conflict, Trespass, Houses, Fences, Fields House, Fence and Field  
 Has Land Been Cut Over? No When By Class of Timber Cut  
 Topography Very Rolling Soil Sandy  
 Adaptable for Grazing and Agriculture Indications of

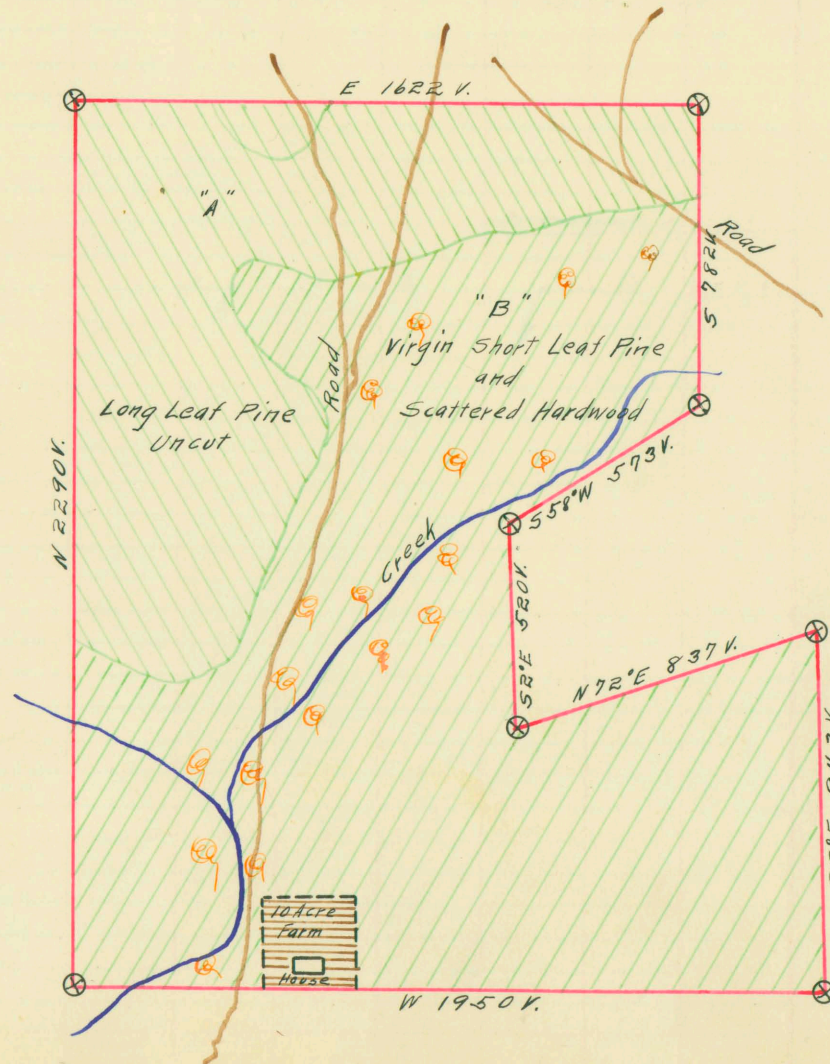
PINE REPRODUCTION				
Area No.	A			
Acres				
L. L. Seedlings				
S. L. Seedlings				
L. L. 7"	3M			
L. L. 8" to 11"	22M			
S. L. 7"				
S. L. 8" to 11"				
Total Feet	25M			

MERCHANTABLE PINE (M. FEET) HERRING LOG SCALE—OUTSIDE BARK MEASUREMENT								
AREA NO.	ACRES	LONG LEAF		SHORT LEAF		LOGS TO TREE	LOGS TO M.	TOTAL FEET
		12" to 16"	17" & Up	12" to 16"	17" & Up			
A		67	2077			3½	7	2,144,000
B				67	2070	3½	7	2,137,000
Total Feet								4,281,000

Growth Isolated or Grouped Jeopardized by  
 Quality Good Length, Sound and Smooth  
 Injury None  
 Preferred Method of Logging Tram

HARDWOOD (M. FEET) SCRIBNER-DOYLE LOG SCALE—INSIDE BARK MEASUREMENT																	
Method of Logging.....	AREA NO.	ACRES	TUPELO GUM	RED GUM		CYPRESS		WHITE OAK		RED OAK		HICK-ORY	ASH	BEECH	MAG-NOLIA	TOTAL	
				Ties	Feet	Ties	Feet	Ties	Feet	Ties	Feet					Feet	Ties
Nearest Stream.....								300	20	175	25					45,000	475
Reproduction <u>None</u> .....																	

Revised Courses and Distances





558

Filed under heading Camp 12th