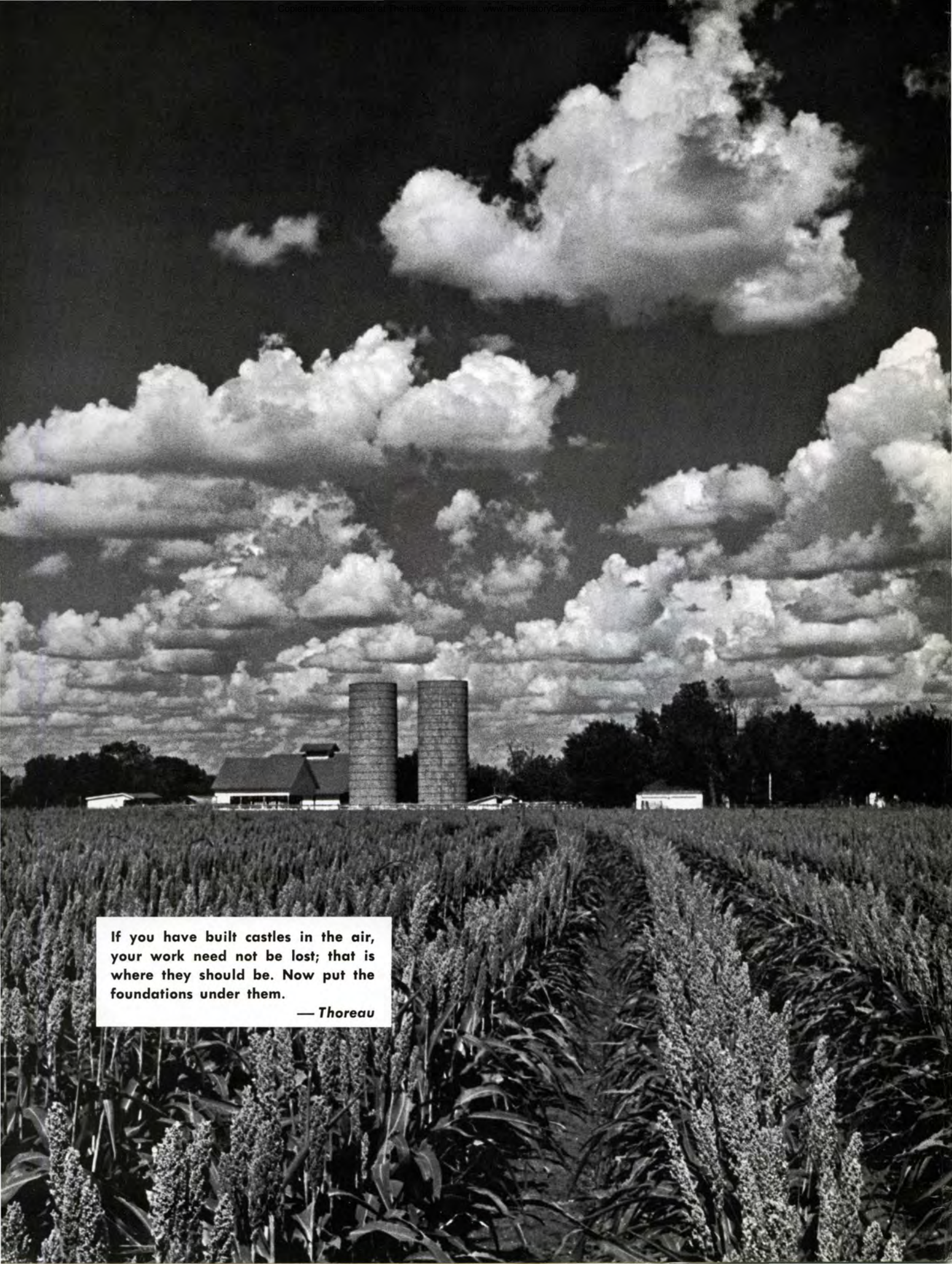




THE *Luffkin* **LINE**

JULY-AUGUST • 1963



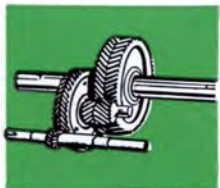
If you have built castles in the air,
your work need not be lost; that is
where they should be. Now put the
foundations under them.

— *Thoreau*



OIL FIELD PUMPING UNITS

THE Lufkin LINE
GEARS FOR INDUSTRY



JULY • AUGUST, 1963
Volume 38 Number 4

Published to promote Friendship and Good Will with its customers and friends and to advance the interest of its products by the Lufkin Foundry & Machine Company, Lufkin, Texas.

Virginia R. Allen, Editor

ROCKY MOUNTAIN DIVISION ISSUE

WILDERNESS OF THE WEST—Tom Burrier.....	4- 7
SNAPSHOTS BY THE LUFKIN CAMERAMAN.....	8-11,24-25
CAMPING ANTICS—Eric Wahleen.....	12-13
LUFKIN INSTALLATIONS.....	14-15
A. J. McKENZIE, GENERAL CONTRACTOR.....	16
HERE & THERE AMONG TRUCKING FOLK.....	17-19
FOLLOWING THE GREAT SNAKE RIVER—Tom H. Inkster.....	20-23
LET'S LAUGH.....	26

COVER: Free Lance Photographers Guild, Inc. Photo

OPPOSITE PAGE: Grain sorghum ripening in summer sun
—Photo by John Jeter, Dallas, Texas

MACHINERY DIVISION

Sales and Service Offices

- | | |
|--|--|
| BAKERSFIELD, CALIFORNIA
2500 Parker Lane
P. O. Box 444
Phone: FAirview 7-3563 | LOS ANGELES, CALIFORNIA
5959 South Alameda
Phone: LUDlow 5-1201 |
| CASPER, WYOMING
East Yellowstone Hwy.
P. O. Box 1849
Phone: 237-2670 | NATCHEZ, MISSISSIPPI
P. O. Box 804
Phone: 445-4691 |
| CRYSTAL LAKE, ILLINOIS
65 N. Williams Street
P. O. Box 382
Phone: 459-5161 | NEW YORK, NEW YORK
350 Fifth Avenue
3904 Empire State Building
Phone: OXFord 5-0460 |
| CLEVELAND, OHIO
316A Suburban-West Bldg.
20800 Center Ridge Rd.
Phone: EDison 1-5722 | ODESSA, TEXAS
1020 West 2nd St.
P. O. Box 1632
Phone: FEderal 7-8649 |
| CORPUS CHRISTI, TEXAS
1413 Casa Grande
Phone: TErminAl 5-8987 | OKLAHOMA CITY, OKLAHOMA
1317 West Reno
P. O. Box 2337
Phone: CEntAl 6-4521 |
| DALLAS, TEXAS
800 Vaughn Building
Phone: RIverside 8-5127 | PAMPA, TEXAS
P. O. Box 2212
Phone: MOhawk 5-4120 |
| DENVER, COLORADO
1423 Mile High Center
1700 Broadway
Phone: ALpine 5-1616 | SHREVEPORT, LOUISIANA
2005 Beck Building
P. O. Box 5578
Phone: 424-3297 |
| GREAT BEND, KANSAS
North Main Street
P. O. Box 82
Phone: GLadstone 3-5622 | SIDNEY, MONTANA
Highway 16
P. O. Box 551
Phone: 482-2707 |
| FARMINGTON, NEW MEXICO
East Bloomfield Highway
P. O. Box 1554
Phone: DAVis 5-4261 | TULSA, OKLAHOMA
1515 Thompson Bldg.
Phone: LUther 7-7171 |
| HOBBS, NEW MEXICO
P. O. Box 97
1212 E. Lincoln Rd.
Phone: EXpress 3-5211 | WICHITA FALLS, TEXAS
727 Oil & Gas Bldg.
P. O. Box 2465
Phone: 322-1967 |
| HOUSTON, TEXAS
1408 C & I Life Bldg.
Phone: CApitol 2-0108 | LUFKIN MACHINE CO., LTD.
Edmonton, Alberta, Canada
9950 Sixty-Fifth Ave.
Phone: GEneva 3-3111 |
| KILGORE, TEXAS
P. O. Box 871
Phone: 3875 | Estevan, Saskatchewan, Canada
P. O. Box 622
Phone: 634-5595 |
| LAFAYETTE, LOUISIANA
P. O. Box 1353 OCS
Phone: CEnter 4-2846 | LUFKIN FOUNDRY & MACHINE CO., INTERNATIONAL
Maracaibo, Estado Zulia, Venezuela
Apartado 1144
Phone: 3132 |

TRAILER DIVISION

Sales and Service Offices

- | | | |
|---|--|---|
| BIRMINGHAM, ALABAMA
3700 10th Ave., North
Phone: 592-8164 | LUBBOCK, TEXAS
709 Slaton Hwy.
P. O. Box 188
Phone: SHERwood 7-1631 | SAN ANTONIO, TEXAS
3343 Roosevelt Ave.
Phone: WALnut 3-4334 |
| DALLAS, TEXAS
635 Fort Worth Ave.
Phone: RIverside 2-2471 | MEMPHIS, TENNESSEE
2074 S. Bellevue
P. O. Box 3182
Phone: 948-7623 | SHREVEPORT, LOUISIANA
U. S. Highway 80, East
P. O. Box 5473, Bossier City
Phone: 746-4636 |
| HOUSTON, TEXAS
2815 Navigation Blvd.
Phone: CApitol 5-0241 | OKLAHOMA CITY, OKLAHOMA
1315 West Reno
P. O. Box 2596
Phone: CEntAl 6-3687 | EXECUTIVE OFFICES & FACTORY
Lufkin, Texas
Phone: NEptune 4-4421
C. W. Alexander, Sales Manager
Trailer Division
Floyd Rogers, Ass't.
Sales Manager |
| JACKSON, MISSISSIPPI
U. S. Highway 80 East
P. O. Box 5647
Phone: 939-3313 | | |

- | |
|---|
| Buenos Aires, Argentina
Matpetrol S.R.L.
Esmeralda 155
Phone: 45-4822 |
| La Paz, Bolivia
Matpetrol Ltda.
Calle Bueno 144
Phone: 2920 |
| Rome, Italy
Via Veneto 169/9
Phone: 463-507 |
| EXECUTIVE OFFICES & FACTORY
Lufkin, Texas
Phone: NEptune 4-4421 |
| L. A. Little, Vice President and Oilfield Sales Manager
C. D. Richards, Manager, Machinery Sales |



TRAILERS FOR EVERY HAULING NEED



MONTANA's 1500 lakes provide ample opportunity for recreation. Lovely Flathead Lake, shown here, is the largest fresh-water lake west of the Mississippi

WILDER

By Tom Burrier

WHEN movie makers seek backgrounds for "big timber, big sky, big country films," it's no accident they head for western Montana, where our remaining tall evergreen forests begin. And it's Nature's design—with a healthy human assist—that so far has battled commercial onslaughts against the forest primeval.

Natural road blocks to "progress" are mountains, from Granite Peak's 13,000 feet in the Rockies, west through a herringbone of lesser ranges to the Cabinets and Bitterroots. White water rivers abet the alpine peaks. And climate caps Nature's conspiracy with early winter blanketing the western wilderness.

But in season, what a boating, fishing, vacation-land!

Our fourth largest state—averaging 550 miles long by 275 deep—is a geographical complex. The Rockies, or Continental Divide, split off the western fifth with a giant, saw-toothed cleaver.



A PACK party breaks camp under the "Chinese Wall" in the Bob Marshall Wilderness Area. The million-acre reserve contains no roads of any kind



THE GRANDEUR of a typical Montana landscape stretches out from Double Arrow Lookout, overlooking Seeley Lake and the Swan River Range

FLATHEAD National Forest is an area of cliffs, mountains and multitudes of wild animals



WILDERNESS OF THE WEST



This fifth holds most of the state's 23 million timber acres: Ponderosa pine, larch, fir, spruce. This vast acreage is included in two National Parks and eleven National Forests.

Within the Forests are eight "Wilderness Areas." No roads, no motor vehicles, no commercial enterprise allowed. There are countless cold water lakes, and miles of the most underrated trout streams in all 50 states. This is a "new frontier" vacation in "old frontier" settings for camper, hiker, trailerist and boatmen.

Take the Bob Marshall Wilderness area, for example.

Along the Continental Divide's backbone, this near-million acres of high country is completely unspoiled; it's destined to remain that way through the "wilderness" designation. Three National Forests border it: Lewis & Clark east, Flathead west, Lolo south. The only practical way of reaching the Area is by horseback—or on foot for the young and hardy.

Bob Marshall was a dedicated conservationist, pioneering the present wilderness Area program. From both sides of the Divide, veteran outfitters schedule regular pack trips into the Marshall area for periods from three days to three weeks. Most belong to the Montana Outfitters & Guides Association, whose high standards include policing members on rates, equipment and competence.

The Bob Marshall Wilderness is well suited to pack trips, good camp sites and ample browse room. Streams harbor fat rainbow trout; game animals are numerous. Rockhounds delight in the profusion of fossils, and botanists find a wide variety of plant life.

Most impressive in this Wilderness is the "Chinese Wall" where the Rockies break away to the east in thousand-foot cliffs for 15 miles. There's but one scaling point from the east, then only by foot climbers.

Flathead National Forest is almost as rugged. In this section of the Forest, Hungry Horse Dam



RED EAGLE, a sight-seeing launch, takes visitors for a cruise on St. Mary Lake in Glacier National Park. Hundreds of other lakes cannot be reached now for lack of roads, but this situation is being remedied rapidly

“The standing offer is \$500 for the first nine-foot sturgeon caught, \$1,000 for a fourteen footer,” says a Polson businessman. “We know they’re in the Lake. So far the biggest is an eight-footer.” There’s twenty other game fish varieties in Flathead.

North from Polson on the Lake’s west side is Flathead State Park, and ten miles farther West Shore State Park. Both are fine camp sites, and favorites of trailerists. There are also private resorts where boats, motors and expert fishing advice are available.

Halfway up Flathead on the east side, Montana University has a biological installation where area wildlife is studied. On the north, Yellow Bay State Park offers campsites. A cluster of motels, and “dude” ranches near the Lake’s head gives the traveler a wide choice of accommodations, both price and type.

From the east, Flathead country is reached on U. S. 2, the only main arterial across northern Montana. It skirts Glacier National Park on the south, crossing the Divide at Marias Pass, one mile high. During summer and autumn, Glacier facilities for campers and trailers are heavily taxed. During this period the wise vacationer crosses the divide to camp in a National Forest.

“We thought 1961 was a peak year,” says a Kootenai National Forest ranger, “then 1962 ran 20% higher. 1963 will be the biggest yet. We’re building new campsites and roads. After all, these Forests belong to the people, they should enjoy all the safety and comfort we can provide.”

Much of western Montana’s charm is the very lack of roads, aside from arterials. Gravel and dirt roads branching from highways are plentiful, generally dead-ending in a mountain meadow, or a trout stream access. They are made to order for camper and trailerist.

Lake and stream fishing is a taken-for-granted asset. Dolly Varden, cutthroat, brown and rainbow trout, bass, perch and sun fish await a visitor’s bait. License costs are lower than most states. Children under 15 are “for free.” A season adult non-resident ticket costs \$10, and a six-day fishing license \$3. There are sliding scales for big game hunting.

There’s something for everybody.

was completed on the Flathead River; otherwise there is no commercial development. Selective lumbering is permitted, and limited cattle grazing. Fine hiking trails and campsites are maintained. Excellent trout fishing is the rule.

Nearby Flathead Lake is the largest natural freshwater body west of the Mississippi. Thirty-five miles long and eight to 15 wide, Flathead is a natural for outboards. The town of Polson on the southern shore has built excellent public launching ramps, and rental outboard boats are available. The town is also junction for U. S. 93 from the south and State Highway 35 from the north. U. S. 93 continues around the west side to Kalispell, where it joins U. S. 2, main route from the east.



LAKE McDonald, on the extreme western edge of Glacier National Park, is typical of hundreds of Rocky Mountain lakes

BEAR grass, official state flower, flourishes along the Continental Divide, in Glacier Park, and the Flathead National Forest areas

The Beartooth Wilderness contains headwaters of the Stillwater and Rosebud Rivers, prime fishing. Grasshopper Glacier inches a few feet down Granite Peak each year. In this clear ice sheet, millions of 'hoppers were quick-frozen in the glacier, centuries ago. They still appear ready to hop if liberated. Mountain goat herds were recently transplanted to Beartooth. Campsites are rugged, but adequate.

Along Idaho's border the Selway-Bitterroot Wilderness includes 300,000 acres in Montana and one and a half million in Idaho. High, rugged peaks feature the terrain. Three state and Federal highways come close to the Selway Area. From there, it's hike or horse-pack. The Outfitters and Guides Association has several member ranches nearby.

The Cabinet Mountains Wild Area is 90,000 acres of tall peaks between the Kootenai and Clark Fork Rivers. Trails are primitive, and hiking the untouched country is a challenge to the most ardent outdoorsman. This is home base for the vanishing grizzly bear.

The Mission Mountains Area east of Flathead Lake contains 75,000 acres of glacier and snow-



fields. It's a hiking wonderland in the season, May through October, when wild flowers blanket the slopes, and snow lilies poke through winter's mantle.

There's wild country aplenty in western Montana, for seekers of our last frontier. There's history, too, with sites of Indian-white battles well marked and accessible. Much of the terrain is as it was centuries ago. Montanans hope to keep it that way. At the same time, they offer a friendly, welcoming hand. Montana is proud of its western wilderness, anxious to parade its wonders, but on guard against exploitation.



JIM GARLICK
Shell Oil Co.
Denver, Colorado



BILL NANCE
Shell Oil Co.
Denver, Colorado



E. C. RUSSO
Shell Oil Co.
Denver, Colorado



E. W. (ED) McILNEY
British American Oil Producing
Co., Riverton, Wyoming



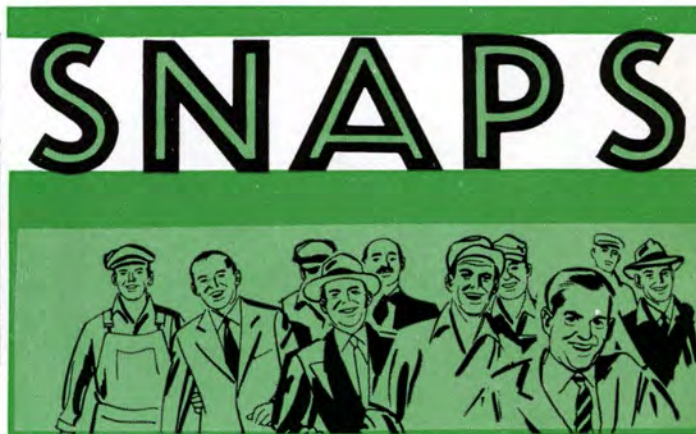
MACK SYKES
Shell Oil Co.
Denver, Colorado



Left to right: **A. A. HARTSHORN**
G. P. VERWAY, **R. B. BELL**, all with The Pure Oil
Co., Denver, Colorado



DEE WALDROOP
Texaco, Inc.
Billings, Montana



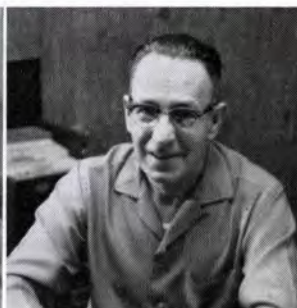
JOHN HELLER
Ken-Tex Oil Corp.
Durango, Colorado



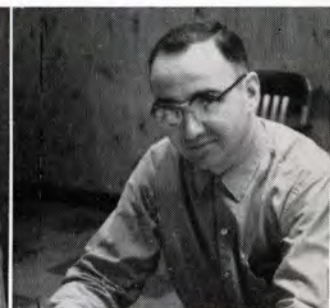
GEORGE LIND
Shell Oil Co.
Billings, Montana



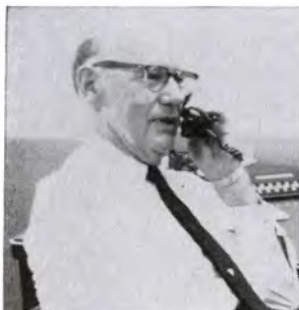
FRANK WICKS
Shell Oil Co.
Billings, Montana



CLYDE LEWIS
Texaco, Inc.
Williston, North Dakota



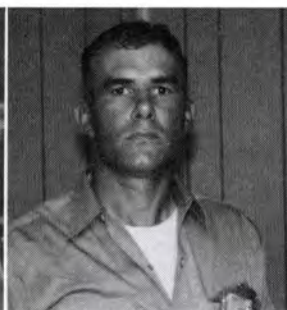
LARRY BARRETT
Texaco, Inc.
Williston, North Dakota



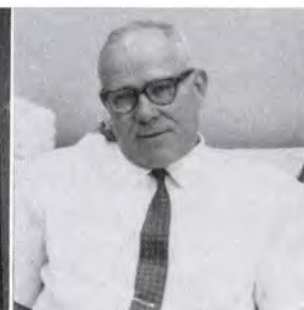
ED GROMLEY
Texaco, Inc.
Denver, Colorado



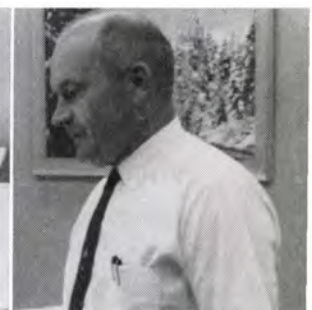
AL DITTMER
Shell Oil Co.
Denver, Colorado



TRACY JETER
Amex Petroleum Corp.
Midwest, Wyoming



CHARLES TARR
Continental Oil Co.
Denver, Colorado



FRANCIS THOMAS
Continental Oil Co.
Denver, Colorado

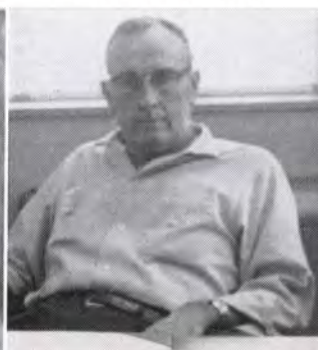
ROY WISENHUNT
Texaco, Inc.
Denver, Colorado

CLAUDE STOLTZ
Shell Oil Co.
Glendive, Montana

ROY FULLER
Amerada Petroleum Corp.
Williston, North Dakota

PAUL MITCHELL
Shell Oil Co.
Glendive, Montana

D. C. BERGER
Texota Oil Co.
Denver, Colorado





TED BLEVINS
Continental Oil Co.
Denver, Colorado



BILL LOONEY
California Oil Co.
Denver, Colorado



ED AUSTIN
Continental Oil Co.
Denver, Colorado



JIM STONE
British American Oil Prod. Co.
Denver, Colorado



BOB BRAY
Continental Oil Co.
Denver, Colorado

HOTS

by the
Lufkin Cameraman



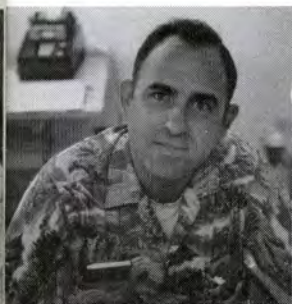
BILL WALTHER
Sinclair Oil Co.
Denver, Colorado



CONNELLY SMITH, left, British American Oil Prod. Co.,
Denver, Colorado; **GEORGE PAYNE**, Rem.
Equipment Co., Houston, Texas



DICK LAUDER
Atlantic Refining Co.
Hamilton Dome, Wyoming



D. W. (DAVE) ANDREA
Continental Oil Co.
Glenrock, Wyoming



JOHN K. WALCH
Continental Oil Co.
Cody, Wyoming



G. H. (GERRY) ORR
Continental Oil Company
Cody, Wyoming



GORDEN FLYE
Shell Oil Co.
Billings, Montana



BOB ENGEL
Shell Oil Co.
Billings, Montana



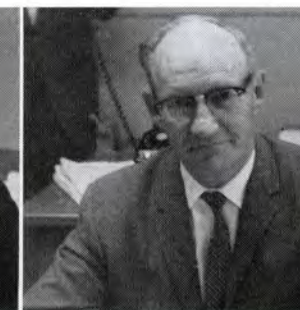
BILL KAISER
Shell Oil Co.
Denver, Colorado



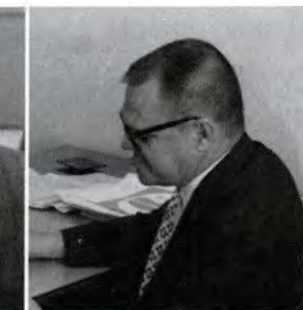
JOE NELSON
The Pure Oil Co.
Denver, Colorado



A. T. RYLANDS
Shell Oil Co.
Billings, Montana



JOHN PFALZGRAF
Continental Oil Co.
Denver, Colorado



OSCAR MORGAN
The Pure Oil Co.
Denver, Colorado

RALPH DARROW
Continental Oil Co.
Denver, Colorado

C. A. "MITCH" MITCHELL
California Oil Co.
Denver, Colorado

HARRY SAGER
Continental Oil Co.
Denver, Colorado

WILLIAM NICHOLS
Continental Oil Co.
Denver, Colorado

BOB DUBEC
Shell Oil Co.
Denver, Colorado





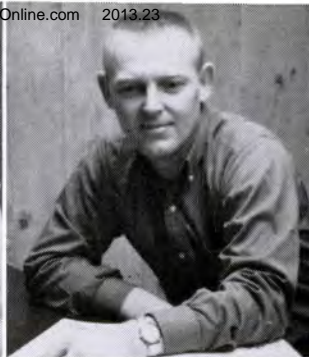
BART GILES
Pan American Petroleum Corp., Casper, Wyoming



GUS COOLIDGE
Humble Oil & Refining Co., Billings, Montana



HERB BUSH
Texaco, Inc. Williston, North Dakota



BOB SLABY
Texaco, Inc. Williston, North Dakota



JACK SAYE
Shell Oil Co. Billings, Montana



FRED VanMETER
Continental Oil Co. Durango, Colorado



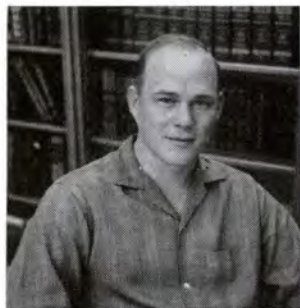
BILL SARTAIN
Atlantic Refining Co. Farmington, New Mexico



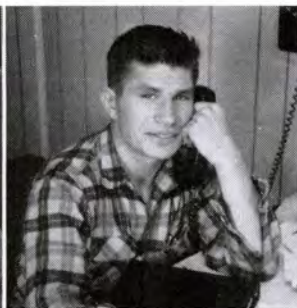
JOE E. DOZIER
Shell Oil Co. Farmington, New Mexico



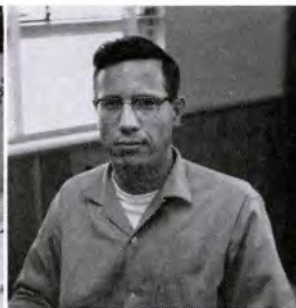
SAM BEELER
California Oil Co. Salt Lake City, Utah



J. F. (JOE) MILLER
Texaco, Inc. Powell, Wyoming



DICK VEGHTE
Amax Petroleum Corp. Casper, Wyoming



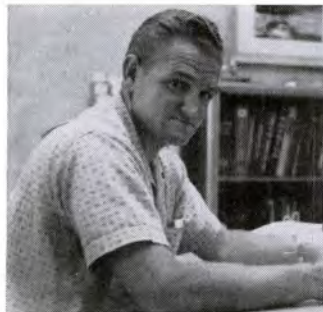
J. L. (JIM) MESSER
Texaco, Inc. Powell, Wyoming



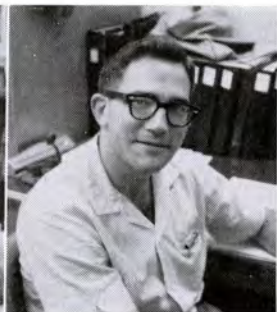
RALPH S. MOORE
Continental Oil Co. Glenrock, Wyoming



DEAN BARNES
Continental Oil Co. Glenrock, Wyoming



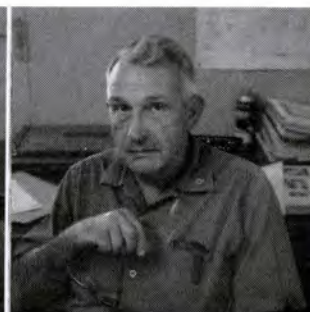
EWELL N. WALSH
El Paso Natural Gas Products Co. Farmington, New Mexico



R. A. (DICK) BELL
Continental Oil Co. Cody, Wyoming



H. A. (BUD) SOMMERS
Pan American Petroleum Corp. Midwest, Wyoming



PAUL A. KINDSVATER
British American Oil Producing Co. Riverton, Wyoming



CHARLES BRYANT
California Oil Co. Rangely, Colorado

HARRY COOK
Phillips Petroleum Co. Cortez, Colorado

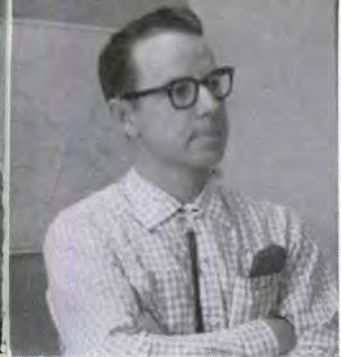
A. G. WALSH
Texaco, Inc. Farmington, New Mexico

R. A. (IKE) ROSENLIB
Sohio Petroleum Corp. Powell, Wyoming

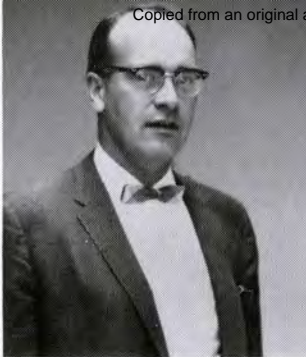
ROLAND W. HART
Sinclair Oil & Gas Co. Baroil, Wyoming

BOB WILSON
Texaco, Inc. Farmington, New Mexico





CHET FRAZIER
Shell Oil Co.
Billings, Montana



GEORGE JUDD
Baumgartner Oil Co.
Denver, Colorado



BOB BOSWELL
British American Oil Prod. Co.
Denver, Colorado



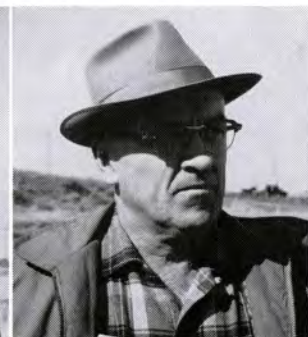
G. D. LANOUETTE
British American Oil Prod. Co.
Denver, Colorado



BUD DEVRIES
Amerada Petroleum Corp.
Williston, North Dakota



C. J. (CHUCK) BOYCE
Pan American Petroleum Corp.
Midwest, Wyoming



VERN HARVEY
Pan American Petroleum Corp.
Midwest, Wyoming



G. A. (GLEN) AYLING
Pan American Petroleum Corp.
Midwest, Wyoming



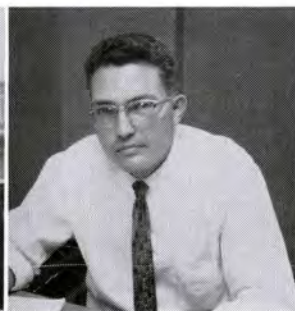
Left to right: **BILL PERDUE**, **BENTON DeWEES**, both with Aztec Oil & Gas Co., Farmington, New Mexico; **BEN HAYS**, The Western Co., Farmington, New Mexico



SAM DeSANTIS
Pan American Petroleum Corp.
Midwest, Wyoming



R. W. (RAY) PARKER
Marathon Oil Co.
Cody, Wyoming



R. E. (BOB) YONTS
Continental Oil Co.
Cody, Wyoming



R. L. (ROD) SEARS
Pan American Petroleum Corp.
Midwest, Wyoming



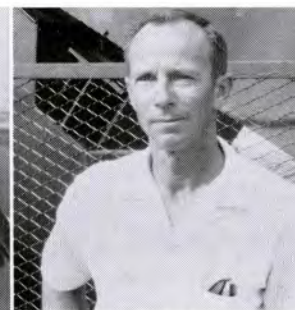
W. P. (BILL) SCHMOE
Continental Oil Co.
Glenrock, Wyoming



C. D. (SMITTY) SMITH
Texaco, Inc.
Powell, Wyoming



J. M. (JIM) GERNERT
Continental Oil Co.
Linch, Wyoming



G. W. (GIBB) SPERLING
Tenneco Oil Co.
Glenrock, Wyoming



A. L. (PETE) USRY
Tenneco Oil Co.
Glenrock, Wyoming



F. E. (TUT) ELLIS
Continental Oil Co.
Linch, Wyoming

CHESTER FARMER
Texaco, Inc.
Farmington, New Mexico

W. D. BURTON
Texaco, Inc.
Farmington, New Mexico

GEORGE BROWN
Continental Oil Co.
Durango, Colorado

ELMER PHILLIPS
Continental Oil Co.
Durango, Colorado

DUANE HALEY
Continental Oil Co.
Durango, Colorado





1 2

EVERYTHING was neatly packed when they left home. But unloading at the camp-site ends up in a tangled jumble of kids and camp supplies. (A list of how many kids are on hand might help)



ERECTING the tent calls for concentrated family coordination as mother stretches in two directions to keep Tipper from walking off with the all-important tent poles



5

DINNER plans are disrupted when camp stove refuses to balance on solid-appearing apple box



6

WHO forgot to put the lid back on the water can? However, this offers an excellent opportunity to study small wild-life such as bugs, insects, drowned field mice (the kids can hold a funeral), mosquitoes and the fine texture of a dissolved cigarette butt

CAMPING

By Eric Wahleen

Many rules for camping conduct have been written and discussed. Organized activity—planned ahead of time—is stressed as one of the most important musts. Familiarity with camping equipment is a common concept designed to forestall mishaps. Leaving a clean campsite upon departure is a basic courtesy easily understood.

Yet, in between the rules lie many unexpected twists. Somehow one can't always visualize ahead of time what may happen. When surrounded by so much air, open sky and unrestrained freedom, the old familiar family takes on different and often unexpected traits.

Beginners, occasional camper-outers, and dyed-in-the-wool tenting families all seem to follow a pattern of minor amusing mishaps. Not all the antics will occur at the same time, but sooner or later all things will happen to persistent campers.

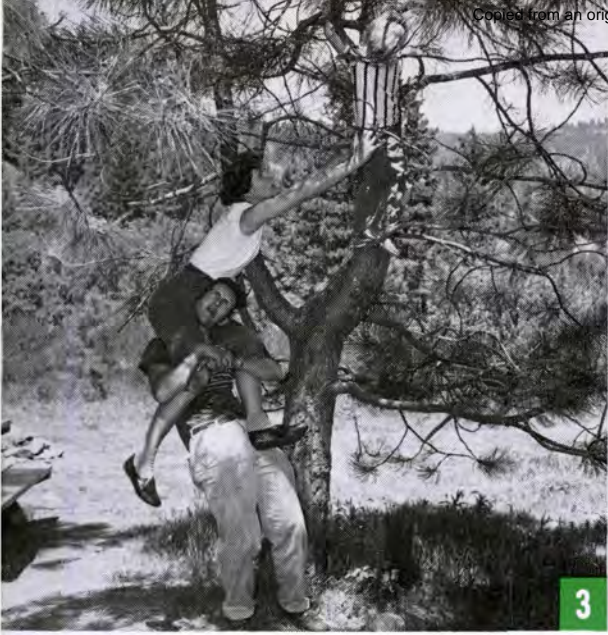
EARLY-morning review of situation finds everything on hand except Tipper. TIP-PPERRRRRRRR! (This is a good means of waking up everybody else in the campground before sun-up)



10



11



3 4

TENT-raising is momentarily disrupted while treed offspring is brought back to earth



KEEPING kids occupied and out of mischief by helping sort food supplies works fine until junior decides to fry an egg in a cold skillet

ANTICS



7

NIGHT-time finds the kids ready to call it a day, except that junior wants to camp by himself down by the big hollow tree. (It might be a good idea to occasionally check the people-capacity of the tent)

JUST hiding from "big ole bears." Pre-camp training pays off: Tipper wasn't lost—everybody else was

DEPARTURE date arrives and the kids gloomily think of the bath they'll get back home. As is easily discerned from these expressions, a glorious time was had by all



8

JUST about sleep-time, mother feels something grab her stomach. But, it's only Tipper, lonesome for mama and wide-awake in the dark wilderness. (He's a form of night-crawler; all campsites have 'em)



9

PEACEFUL dreams are interrupted by downfall of canvas domicile. (Tomorrow the stakes will be driven more firmly in the ground AND a flashlight put within easy reach)



12



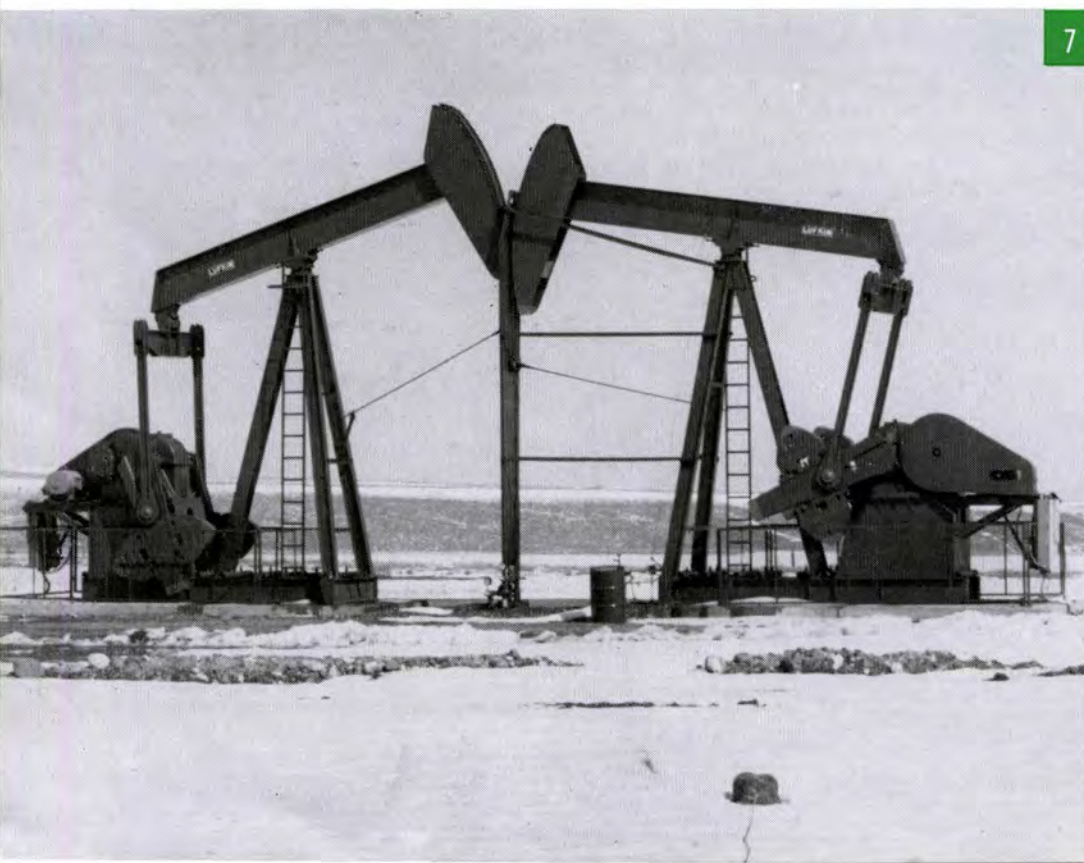
1



2



LUFKIN Installation



7





ons

3

4

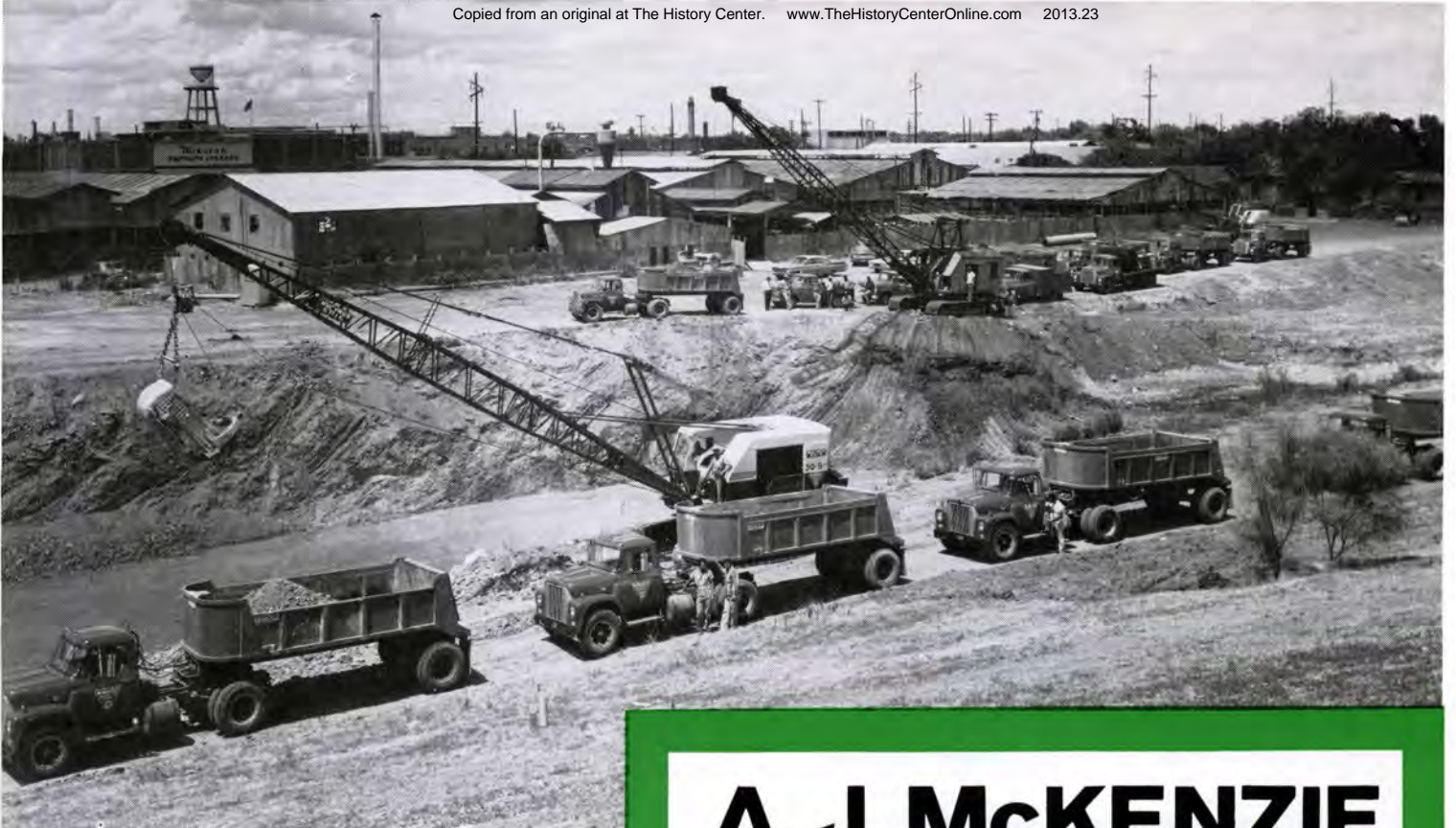
- 1 LUFKIN M-456D-253-144 Unit, Placid Oil Company, Tule Creek Field, Wolf Point, Montana.
- 2 LUFKIN M-228D-246-86 Unit, Skelly Oil Company, Dwyer Field, Dagmar, Montana.
- 3 LUFKIN M-160D-200-74 Unit, James A. Lewis Engineering, Inc., Operators for Signal Drilling and Exporation, Inc., et al, Dwyer Field, Dagmar, Montana.
- 4 LUFKIN M-228D-200-86 Unit with LUFKIN HT-333B Gas Engine, Texaco, Inc., Grenora, North Dakota.
- 5 LUFKIN C-228D-246-74 Unit, Phillips Petroleum Company, Dwyer Field, Dagmar, Montana.
- 6 LUFKIN M-114D-143-86 Unit, Pan American Petroleum Corporation, Midwest, Wyoming.
- 7 TWO LUFKIN C-320D-256-120 Units, Texaco, Inc., Spring Creek, Wyoming.
- 8 LUFKIN M-228D-246-86 Unit, Anschutz Oil Company, Inc., Lignite, North Dakota.

5

6

8





A LARGE fleet of LUFKIN HD 10-12 dump trailers assist A. J. McKenzie in one of his various construction projects

A. J. McKENZIE

General Contractor

SOME 51 years ago, McKenzie Construction Company was organized as a Missouri corporation. Forty-two years ago in 1921, it was incorporated in Texas with headquarters in San Antonio. Throughout this half century, McKenzie Construction Company has gained the reputation of being one of the leading general contracting firms in the entire Southwest.

Their scope of activity has not been limited, and they have to their credit countless large office buildings, hotels, motels, highways, super-express ways, utilities and industrial construction. Name it and McKenzie probably has had experience with it.

Among the most well-known of his successful projects in San Antonio are the Smith-Young Tower, Plaza Hotel and Annex, Auditorium Circle, Olmos Dam and the Alamo National Building. Recently, McKenzie completed construction of the El Tropicana Motor Hotel, Southwestern Bell Telephone Company Division Office building, a 500-bed addition to Lackland Hospital, two sections of an express way, and the deepening of Woodlawn Lake.

But McKenzie's work is not limited to San An-

tonio by any means. Throughout the Southwest, representative construction by this Company may be found, such as the Driscoll Hotel in Corpus Christi, the first Hilton Hotel in Dallas, a Thirty-Million-Dollar contract at the Pantex Ordnance Plant in Amarillo, two runways at Chase Field in Beeville, 90 miles of 27-inch water line in West Texas.

Also three miles of six-foot diameter tunnel for the City of Nashville, and three 2200-foot-deep vertical mine shafts 15 feet in diameter for a potash mine in New Mexico.

Currently, the McKenzie Company is deepening and widening Alazan Creek in San Antonio as well as constructing a 10-story office building in addition to a number of other projects.

The Alazan Creek project is no small job. Using a fleet of 18 Lufkin HD 10-12 dump trailers, McKenzie will have moved some 600,000 yards of dirt and gravel when the project is completed. They have found the LUFKIN HD 10-12 ideally suited for hauling wet, sticky material.

The Company presently employs 300 persons and is guided by A. J. McKenzie, President. Their motto is "Skill—Responsibility—Integrity."



B. F. GARRARD
J. T. Garrard Transfer Co.
Inc., Starkville, Mississippi



GALE NIX
Memphis, Tennessee



JACK GREEN
Bryant Bros. Packing Co.
West Point, Mississippi



ESTEL HAGWOOD
Lone Star Bag & Bagging
Houston, Texas

HERE and THERE among TRUCKING FOLK



BILL HOOPER
Dye Trucking Co.
Dallas, Texas



ROBERT MUCKLEROY
Kirbyville Auction Barn
Kirbyville, Texas



CHARLES C. PORTER
C & H Transportation Co.
Inc., Dallas, Texas



DON McADEN
McAden Co.
Gordonville, Texas



ROSS HOPKINS
C & H Transportation Co.
Inc., Dallas, Texas



J. M. (DICK) MUCKLEROY
Kirbyville Auction Barn
Kirbyville, Texas



TOM MILAM
Charleston, Mississippi



FRANK DENNY
Cox-Denny Truck Leasing
Dallas, Texas

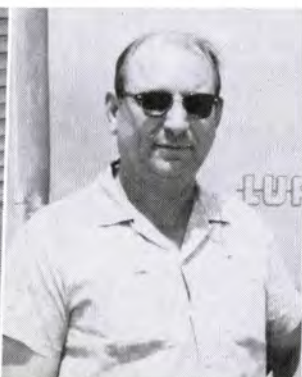
DOUGLAS MACDONALD
Dye Trucking Co., Dallas, Texas

CECIL YOUNG
Brownsville, Texas

BILLIE F. MIRIKE
Burnet, Texas

J. P. BRILEY
Lower Colorado River Authority
Austin, Texas

J. T. EDMISTON
Austin, Texas





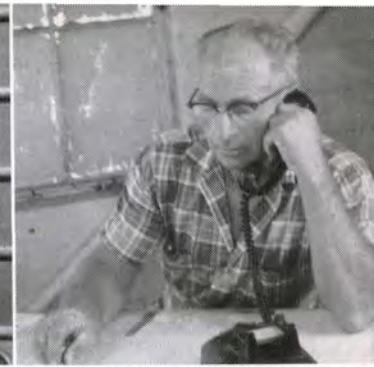
GEORGE HAMMON
C & H Transportation Co. Inc.
Dallas, Texas



J. O. ANDERSON
Republic Leasing Co.
Houston, Texas



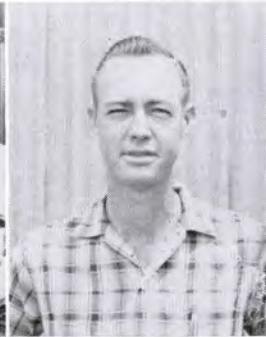
GENE LOGAN
Lone Star Bag & Bagging
Houston, Texas



HENRY HOHENSEE
Lone Star Bag & Bagging
Houston, Texas



JESS HAYNES left
Kermit, Texas; **BILL BLANKENSHIP**
Brownfield, Texas

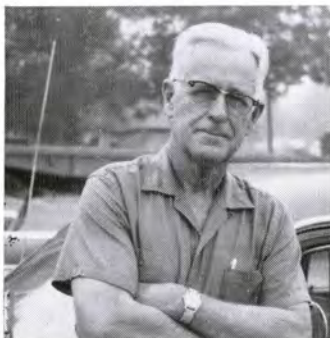


GEORGE De ARMENT, Jr.,
Texas Drive-Ur-Self Inc.
San Antonio, Texas



BUSTER BENNETT
Superior Diesel Service
Little Rock, Arkansas

**MORE
THERE**

E. H. JOHNSON
E. A. Johnson & Sons Oilfield
Haulers, Daisetta, Texas



LARRY McGAUGHY
Truck Center Inc.
Tupelo, Mississippi



WILLIS E. SEARS
Willis E. Sears Trucking Co.
Jasper, Texas



THOMAS (TOMMIE) McMILLIAN
A. C. McMillian Trucking
Co., Lubbock, Texas



KEN GIDDENS left, C & H Transportation
Co. Inc., Dallas, Texas; **GENE CULBERTSON**
Lufkin Trailers, Dallas, Texas



Left to right: **J. B. SMITH** Lufkin Trailers, Memphis,
Tenn.; **MAURICE CODDELL** Trans-Cold Express,
Dyersburg, Tenn.; **LEE STALEY**, Memphis, Tenn.



HUBERT RHOADS
Alma Trucking Co.
North Little Rock, Arkansas



W. T. KIDD
Little Rock, Arkansas

A. L. ROBBINS
Hurst, Texas

MRS. AMELIA RIDGELL
Arkansas Diesel Service
North Little Rock, Arkansas

BOB HARTMAN
Crowe Gulde Cement Co.
Amarillo, Texas

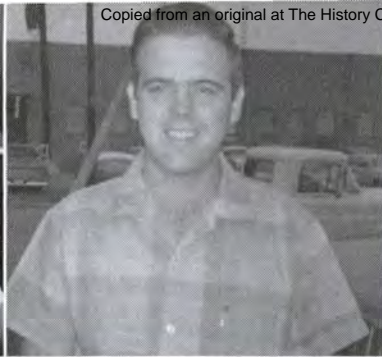
CHARLES CLINE
C. C. Jones Produce Trucking
North Little Rock, Arkansas

REX KEE
Gruber, Texas





T. E. STERNBERG
Metallic Steel Building
Houston, Texas



BILLY COX
Cox-Denny Leasing
Dallas, Texas



R. Q. FARRIS
Farris Oilfield Hauling
Daisetta, Texas



MRS. JEAN HAM
Byrd Sand & Gravel
Lubbock, Texas

HERE and among Trucking Folk



DAVID MAXWELL
Mid-South Refrigerated Transit Co.
North Little Rock, Arkansas



CHARLES BROWN
Newton Motor Co.
Newton, Texas



THURMAN BRIDGEMAN
North Little Rock,
Arkansas



GENE FULLER
Allison-Archer Motor Co.
Jasper, Texas



DES BARRY
Galveston Truck Line
Houston, Texas



GEORGE ALLISON
Allison-Archer Motor Co.
Jasper, Texas



DEAN MASSEY
Bruce, Mississippi



R. MILTON LOVE
Dallas County Tax Office, Highway
Department, Dallas, Texas



Left to right: **BOB GRAMLING**
C. O. BULER, BILL HERRING Republic
Leasing Co., Houston, Texas



MAX BAGWELL, left, Byrd Sand &
Gravel, Lubbock, Texas and **FLOYD ROGERS**
Lufkin Trailers, Lufkin, Texas

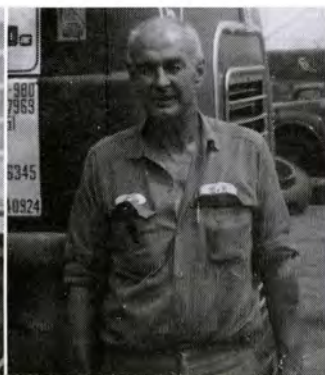
FRANK MOSBY
Ward Supply
Little Rock, Arkansas

JIM O'HARA
C & H Transportation Co., Inc.
Dallas, Texas

AL NOVASAD
R. E. Smith Ranches
Houston, Texas

C. C. JONES
C. C. Jones Produce Trucking
North Little Rock, Arkansas

PAUL LISTER
Morrison Supply
Fort Worth, Texas



Following THE GREAT SNAKE

Snake River

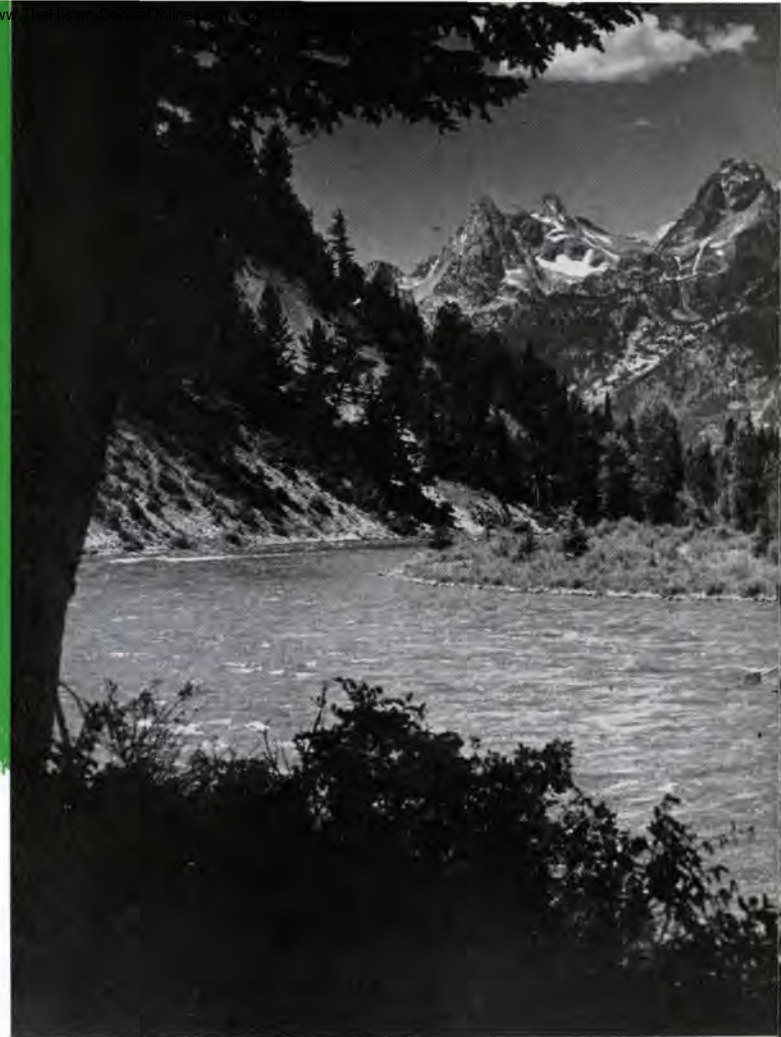
By Tom H. Inkster

TO travel on highways alongside the Snake River from its source in Wyoming across Idaho and Washington to where it spills into the Columbia River is an adventure packed with a delightful mixture of history, interesting places and fascinating vistas. So varied is the scenery, one gets the impression of being in many places at one time.

Roaring waterfalls, singing cascades and placid water, white, green, blue, and sometimes muddy where creeks from distant hills empty into the river, the Snake winds its way to the sea. Rising in the Yellowstone Park area, it flows one thousand miles between mountain ranges, through rock-walled gorges, over lava-covered plains and along fertile valleys southerly, westerly and northerly in such a way that it drains nearly the whole of Idaho. The 56 rivers and 74 large creeks that pour into it drain parts of Wyoming, Utah, Nevada, Oregon and Washington.

The Snake was roundly coursed by pioneers who had to ford it countless times on their westward trek. It spewed up gold for the treasure seekers and today it is acclaimed through its development of power for a northwest industrial empire and transforming an area of sagebrush and jackrabbits into fertile farming land. It passes ghost towns and bustling cities, creating great awesome canyons and scenes of majestic beauty. On either side of the river there are lakes teeming with fish and no end of unusual and interesting things to see.

Ever-changing wind-sculptured objects on the scenic sand desert give a touch of magic to Idaho's "Sahara." Big and Little Lost Rivers converge to-

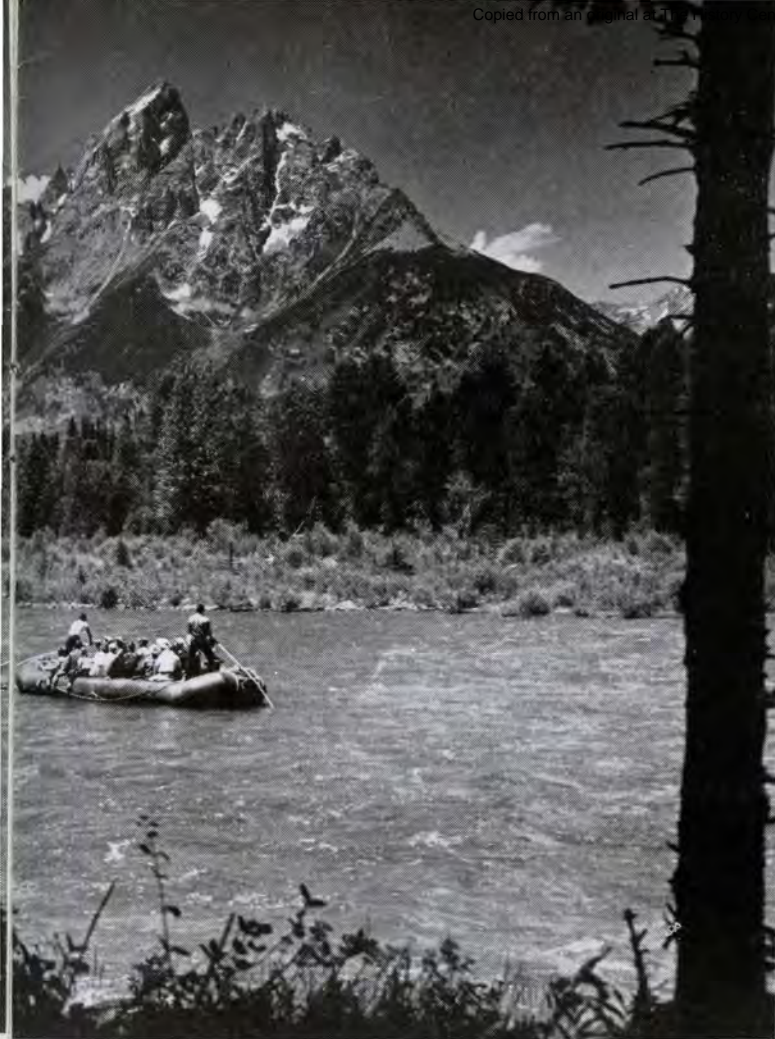


ward a seeming confluence but, instead, literally drop from sight into the desert floor. There are ice caves, canyons, gorges, dunes, forests, snow-capped peaks and rock formations that resemble cities, like City of Rocks northwest of Gooding, where the fortune stashed away by a highwayman has never been found.

A float trip from Jackson Lake down thirty miles of the Snake winding through a valley thickly populated with elk, buffalo, deer and bear may be made for Eleven Dollars. With the Grand Tetons forming a backdrop, this is indeed an exceptional outing that takes one to nature's back door in the wilderness.

At a pleasant park in the center of Idaho Falls, the Snake River drops over a long shelf in a gorgeous display of beauty. Idaho Falls is noted for its magnificent temple, a reminder that forty percent of Idaho's population are Mormons. One can drive across the Snake River on top of the dam at American Falls, with the white-plumed crests in plain view below.

Ghosts of Idaho's fabulous mining days are scattered throughout the state. The road from Murphy to Silver City, jewel of the faded gold camps, hidden high up in a rugged and desolate



RAFTING down the first 30 miles of the Snake River, tourists may see many examples of the wild life that abound in this area

Grand Teton Lodge Co. Photo



THE SNAKE River falling and cascading in its surge westward is seen in all its splendor at Idaho Falls

Idaho Falls Chamber of Commerce Photo

section of the Owyhee Mountains, is rough but safe. A forsaken and weatherbeaten church, perched high on a rock ledge, watches like a specter over empty Silver City. One rusty ore car remains as testimony of the boom days when over ten thousand adventurers flocked in to reap the bonanza. The little creek still sings as it tumbles its merry way under the aged Masonic building. Down below, bands of wild horses roam the Owyhee breaks, giving a mysterious air to the sparsely settled land, where weather and water have fashioned wierd formations and fantastic canyons.

Another interesting place where mining flourished and highwaymen frequently died at their trade is quickly and easily reached by driving from Boise on a paved highway to fascinating Idaho City, mining monarch of the 1860's and the first capital of Idaho Territory. Just below Idaho City, in plain view from the highway, are immense piles of stones and gravel left by the placers near Mores Creek. Traces of gold can still be panned in Mores Creek that twists like a corkscrew out of the high hills.

Between the Snake River and the mountains of central Idaho stand numerous piles of lava caused by past volcanic activity, the largest mass being



CRATERS of the Moon National Mounment near Arco affords a spectacular display of lava flows, cinder cones and other phenomena resulting from volcanic activity. It is suggestive of a telescopic view of the moon

Idaho Dept. Commerce & Development Photo



THIS is Brownlee Dam, first unit of Idaho Power Company's new three-dam development in Hells Canyon between Idaho (left) and Oregon. At right is the spillway which is as tall as a 14-story building. About a mile upstream is fish facility used to collect ocean-bound salmon for hauling in custom-built trucks around the dam

Idaho Power Company Photo



River Gorge at Twin Falls, a stop at Jerome or Shoshone when driving north gives a pleasant surprise. Water from underground streams makes any brand of coffee taste so delicious strangers ask if there is a special secret. Coffee is five cents a cup and a good full course meal can be had for One Dollar.

There is ice skating and swimming all through the summer at Sun Valley. On seeing the long rows of sharp jagged peaks, just north of Idaho's resort showplace, it immediately becomes apparent why the sawtooth Mountains were so named. The sweeping view down into the Stanley Basin from Galena Summit is really breathtaking.

Many people climb to the base of the world-famous balanced rock near Buhl to have their picture taken touching the showpiece of Magic Valley. This balloon-shaped stone formation, 40 feet high, is located in a canyon that was an Indian meeting place and the colorful pillars and colonnades look like a section lifted out of Zion Canyon in Utah. A few miles north of Buhl a series of waterfalls, extending for two miles, cascade down the bank of the Snake River. Called Thousand Springs, they are a fabulous wonderland that has long been a source of mystery, but believed to be from the Lost Rivers which disappear completely into the desert about 150 miles northeast near Arco.

OVER-ALL view shows downstream-migrant fish facility, first of its kind ever built, that Idaho Power Company operates in the Brownlee reservoir to give safe passage to ocean-bound salmon and steelhead fingerlings

Idaho Power Company Photo

Craters of the Moon National Monument. The general appearance of the eerie spectacular display of lava flows, giant cinder cones and extraordinary variety of phenomena associated with basaltic eruption is suggestive of a telescopic view of the moon, and scientists wonder if astronauts returning from their first landing on the moon will describe a similar terrain.

Much of the highway westward from Pocatello was once part of the Oregon Trail and there are many historical markers. After crossing the Perrine Bridge, 476 feet above the awesome Snake

A modern 30-mile highway is now completed from Cambridge to Brownlee Dam and a good secondary road extends to Oxbow Dam, 12 miles farther down the Snake River. The third dam is being built another 23 miles downstream in the very heart of Hell's Canyon. When completed there will be a paved highway beside the lake which will replace the rushing white water in Hell's Canyon.

From the dams a steep gravel road leads to Cuprum, where one may travel by jeep to a look-out point for a panoramic view of Hell's Canyon. This mighty slash, the deepest known in North America, lies along the Idaho-Oregon boundary under the western rim of the Seven Devils Mountains.

A fine highway from Hell's Canyon winds through Oregon to the Pacific Coast. Or one can



ALONG the base of immense rock walls, the road to new Oxbow Dam twists as does the famous Snake River itself

Idaho Power Company Photo

return to Cambridge and head north to travel beside the Salmon until it turns west and then follow the Clearwater to Lewiston where it joins the Snake.

Heading west through Washington one may enjoy a most unusual experience by crossing the Snake River on a unique little ferry at the mouth of the Palouse River. This small craft which has been in service for over a hundred years will soon be replaced by a bridge. A few miles along the highway the Palouse River plunges 198 feet over a cliff into a canyon through which it roars to join the Snake. Continuing for another sixty miles, the Snake enters a struggling stream, swelling it into the mighty Columbia.

BREATHTAKINGLY awesome in its rocky ruggedness, this is the very heart of Hells Canyon of the Snake River. This area will be accessible over a good highway when the third dam is completed

Idaho Power Company Photo

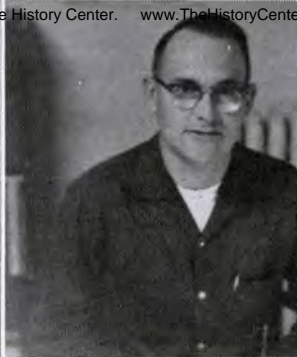




W. W. WEIR
Pure Oil Co.
Moab, Utah



E. B. SINCLAIR
El Paso Natural Gas Products Co.
Farmington, New Mexico



BILL SHRIVER
Phillips Petroleum Co.
Cortez, Colorado



DON HELMS
Standard Oil Co., of Texas
Farmington, New Mexico



J. M. GUENTHER
Texaco, Inc.
Farmington, New Mexico

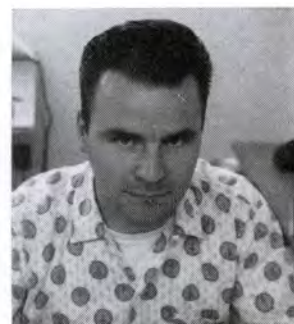
MORE Snapshots

Continued from page 11

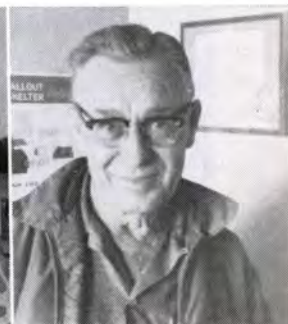


Left to right, front row: **JIM ROE**, Lufkin Foundry, Denver, Colo.; **JERRY GOLL**, Shell Oil Co., Billings, Mont.; **HAROLD WYNN**, Pan American Petr. Corp., Elk Basin, Wyo.; **LARRY COOKSEY**, Shell Oil Co., Billings, Mont.; **DON OBERMIER**, Shell Oil Co., Glendive, Mont.; **L. A. (PETE) LITTLE**, Vice Pres., Lufkin Foundry, Lufkin. Second row: **FRED GRIFFIN**, Lufkin Foundry, Lufkin; **BOB TIGHE**, Pan American Petr. Corp., Billings, Mont.; **JOE BECHTOL**, California Oil Co., Denver, Colo.; **WAYNE TODD**, Pan American Petr. Corp., Lignite, N. D.; **VIRGIL SHEPPARD**, Pan American Petr. Corp., Elk

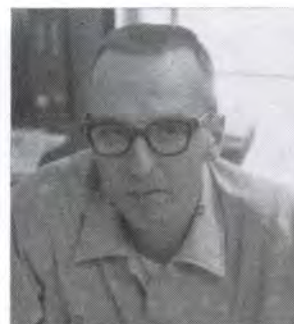
Basin, Wyo.; **CHESTER NENNY**, **MARVIN MOODY**, both with Cities Service Oil Co., Liberal, Kans. Third row: **BAYO HOPPER**, Lufkin Foundry, Lufkin; **BILL BROWN**, Murphy Corp., Poplar, Mont.; **LYLE CARPENTER**, **MILTON WALTHER**, both with Lufkin Foundry, Lufkin; **JOHN FINCHER**, Lufkin Foundry, Sidney, Mont.; **IB LUECK**, **KENT MCDANIEL**, both with Continental Oil Co., Lewiston, Mont. Back row: **JIM PARTRIDGE**, Lufkin Foundry, Lufkin; **STEVE GARNER**, Lufkin Foundry, Great Bend, Kans.; **BOB ROBBINS**, Pilot, Wichita, Kans.; **BLAKE SEAY**, Cities Service Oil Co., Liberal, Kans.



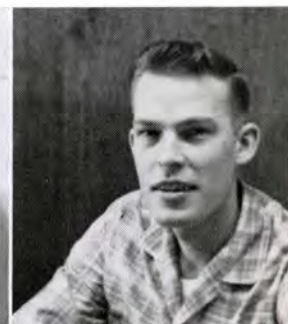
A. (BUTCH) MADRAZO
Continental Oil Co.
Glenrock, Wyoming



M. B. CALLAN
California Oil Co.
Rangley, Colorado



DICK YATES
Shell Oil Co.
Billings, Montana



JIM SUNDINE
Texaco, Inc.
Williston, North Dakota



JOHN J. STROJEK
El Paso Natural Gas Products Co.
Farmington, New Mexico



GENE WILCOX
Atlantic Refining Co.
Farmington, New Mexico



KELLY P. HEMMERT
Pan American Petroleum Corp.
Midwest, Wyoming



K. N. KITCHINGS
Phillips Petroleum Co.
Cortez, Colorado



JERRY LACEY
Tenneco Oil Co.
Durango, Colorado

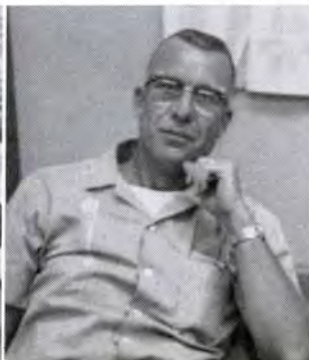
MIKE MAHOOD
Tenneco Oil Co.
Durango, Colorado

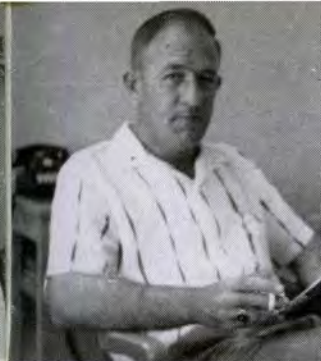
DEAN ST. CLAIR
Pan American Petroleum Corp.
Midwest, Wyoming

C. E. LEONARD
Mobil Oil Co.
Farmington, New Mexico

TOM WEATHERS
Continental Oil Co.
Durango, Colorado

EARL RAMSEY
Sunray DX Oil Co.
Farmington, New Mexico

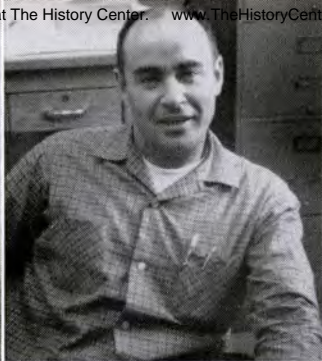




R. W. PATTERSON
California Oil Co.
Red Wash Field, Utah



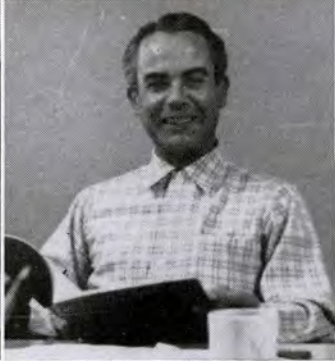
J. S. (JIM) KELLY
Continental Oil Co.
Cody, Wyoming



JOHN LUCHETTA
Amax Petroleum Corp.
Newcastle, Wyoming



KEN LEWIS
Atlantic Refining Co.
Hamilton Dome, Wyoming



JOE SALMON
Aztec Oil & Gas Co.
Farmington, New Mexico



HARRY SCUTT
Pan American Petroleum Corp.
Midwest, Wyoming



ROGER BUSH, left, Billings, Montana;
GUY LOOKABAUGH, Tulsa, Oklahoma,
both with Humble Oil & Refining Co.



FRED BROCK, left, **JIM COOPER**, both with Texaco, Inc.,
Farmington, New Mexico



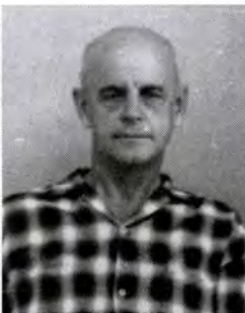
PAUL K. KNIGHT, left
F. H. (MICK) MERELLI,
both with Amax Petroleum Corp.,
Midwest, Wyoming



ADOLPH JOHNSON
Humble Oil & Refining Co.
Vernal, Utah



BOB SEAY
California Oil Co.
Red Wash Field, Utah



F. L. MERRY
California Oil Co.
Rangely, Colorado



WAYNE FINCHER
McAlester Fuel Company
Billings, Montana



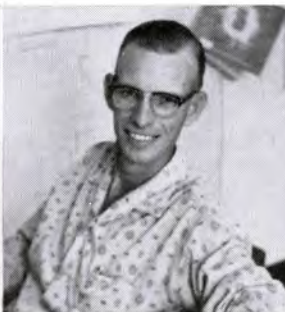
Left to right: **D. H. (DON) SHARP**,
G. H. (HARVEY) WESTBROOK, **DEAN R. COSTELLO**
all with Continental Oil Co., Linch, Wyoming



CLAYTON JOHNSON
Equity Oil Co.
Salt Lake City, Utah



R. L. GREEN
California Oil Co.
Salt Lake City, Utah



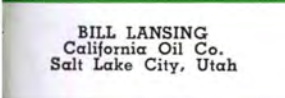
BOB PRATT
Phillips Petroleum Co.
Cortez, Colorado



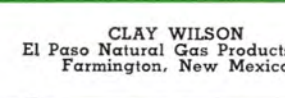
HAROLD STONER
Phillips Petroleum Co.
Cortez, Colorado



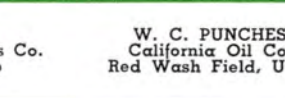
CHUCK ENTERLINE
California Oil Co.
Rangely, Colorado



BILL LANSING
California Oil Co.
Salt Lake City, Utah



CLAY WILSON
El Paso Natural Gas Products Co.
Farmington, New Mexico



W. C. PUNCHES
California Oil Co.
Red Wash Field, Utah



LOAL ANDERSON
California Oil Co.
Red Wash Field, Utah



J. H. JAMES
California Oil Co.
Red Wash Field, Utah





The new skirts are so short that men who used to sit in sidewalk cafes to watch the girls pass now pass to watch the girls sit in sidewalk cafes.

Some critics say the "Twist" is an asset to music.

The doctor was discussing health and hygiene with his spinster patient.

"Even though you take a bath every day, you can't stay healthy just by bathing alone."

"Maybe not, doctor," she snapped back, "but I can stay out of trouble by bathing alone!"

The couple had been married for 10 years and were still childless. The husband was a member of a prolific family and his brothers and sisters delighted in ribbing him about his apparent inadequacies.

At church one day, after a christening where he'd been one of the godparents, he spoke to the priest. "Father, I hope you'll pray for my wife and me. We've been married a long time, but have not been blessed with children."

Without batting an eye, the priest answered, "You know, my boy, it isn't done by prayer alone."

A petroleum engineer and his wife were visiting some friends in New Orleans, and attended a cocktail party with them. The engineer's wife had never visited the deep South before and she had always heard that it was a romantic place. However, as the party progressed, it so far exceeded her expectations that she became a little worried.

"It's just incredible," she finally confided to her hostess. "Every man who talks to me propositions me."

"My dear, don't give it another thought," assured the older woman. "At a party in New Orleans, that's just common courtesy!"

"Why did you RUN home last night?"

"I was being chaste."

Flirtation is attention without intention.

A geologist can look at a platinum blonde and tell virgin metal from common ore.

"I thought you told me your brother was always trying to get out of things. Well, just the opposite is true!"

You're getting old, pardner, when you don't care where your wife goes, just so you don't have to go along.

If your wife is no longer suspicious when you come home late, it's later than you think.

Did you hear about the musician who worked all week on an arrangement and then his wife didn't go out of town after all?

I have two down in front," said the usherette as her strap broke.

His father told him never to pass up a wall flower at a dance because she might be a dandelion in the grass.

After delivering Mrs. Johnson of her tenth child, the doctor called the husband aside.

"Next time you feel like propogating," he said, "ask yourself if you can support another child?"

"Doc," replied Johnson, "when I feel like propogatin' I feel like I could support the whole state of Georgia."

"What happened when you whistled at the beautiful girl who was walking her dog?"

"She walked right past me as if I were a lamp post . . . but her dog didn't."

The well-reared girl should never wear slacks.

An absent-minded secretary took her clothes to the office—and her boss to the cleaners.

The slowest thing in the world is a nudist going through a barbed wire fence.

Three soldiers who had been away on the fighting front for two years found themselves switching trains in their own home town with a half-hour between connections. The three of them decided to go home.

At train time the first two soldiers were at the station, but the third wasn't.

Finally, just as the train was pulling out the third came running up and jumped on. He was soaking wet.

"What happened to you?" asked the first two.

"When I came in the door, my wife was in the bath tub," he said.

You can say this for honeymoons—at least they get the young people to bed at a decent hour!

"Gee, my girl's parents must be poor. They have only one bridge table at her house and it's as rickety as can be."

"Huh, you're lucky. My girl's worse than that. We have to play on the bed."

Girls who do everything under the sun will get everything sunburned.

Late one afternoon, Sam returned home unexpectedly and found his very homely three-hundred-pound wife being kissed by his pal, Max.

"Listen Max," protested Sam, "I must—but what's your reason?"

A bishop served in the hill country of the Ozarks and visited a certain small parish once a year for Confirmation. In one of his classes, he noted a young man and a young woman who seemed to be quite fond of one another. The next year when he came around to the parish he spied the couple again—this time with a baby.

"Oh, did you get married?" he asked, beaming at the young couple.

Two jaws dropped simultaneously and the thunderstruck girl asked: "My gosh, isn't that what you did the last time you were here?"

SPOT DUMPING AND SPREADING

an easy task for any

LUFKIN FRAMELESS HYDRAULIC



MODEL HD-2

- SPOT TRAILER using 90° jackknifing if necessary
- LOCK TRAILER BRAKES — truck is pulled back as hoist is raised
- EXTREME OFFSET TAILGATE HINGES LET GATE OPEN HIGHER

*NO LOST TIME . . . TRUCK
Never Stops as Trailer is Raised
or Lowered . . . AN EXCLUSIVE
HYDRAULIC FEATURE!*

MORE
Payload -- Profit

**PRECISE
CONTROL**

- SPREADS evenly and easily as hoist goes up and truck moves smoothly along road
- DRIVER never leaves cab . . . allowing more frequent loads . . . and greater profits



MODEL HD-2

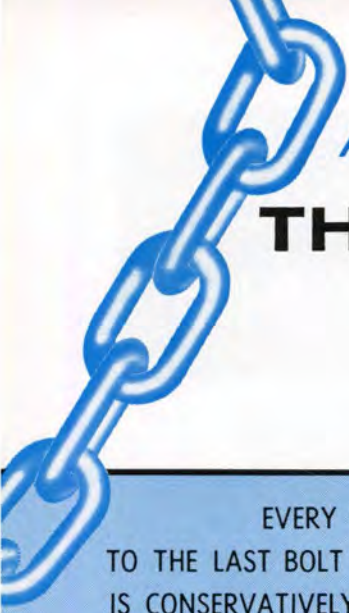
SLANTED TAILGATE provides positive closing . . . also allows maximum efficiency when dumping into pavers and finishing machines.

LUFKIN TRAILERS

DIVISION OF LUFKIN FOUNDRY & MACHINE CO.
FACTORY: LUFKIN, TEXAS • Phone NEptune 4-4421

Branches and Sales Offices { HOUSTON • DALLAS • WACO • FORT WORTH • LUBBOCK • SAN ANTONIO • SHREVEPORT
OKLAHOMA CITY • BIRMINGHAM • MEMPHIS • JACKSON, MISS. • CARTHAGE, MO.

Distributors located throughout the United States

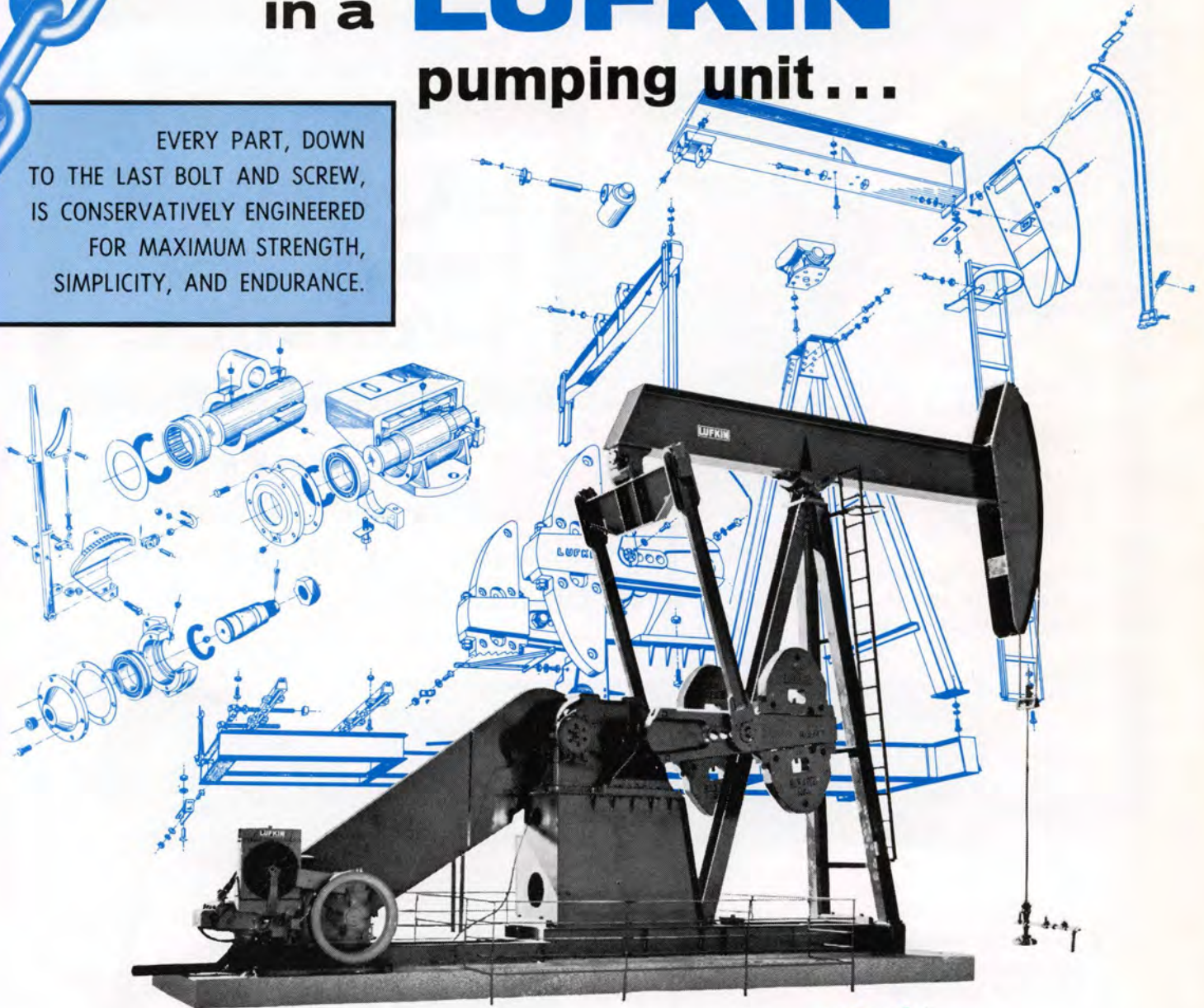


A Chain is no Stronger than its Weakest Link

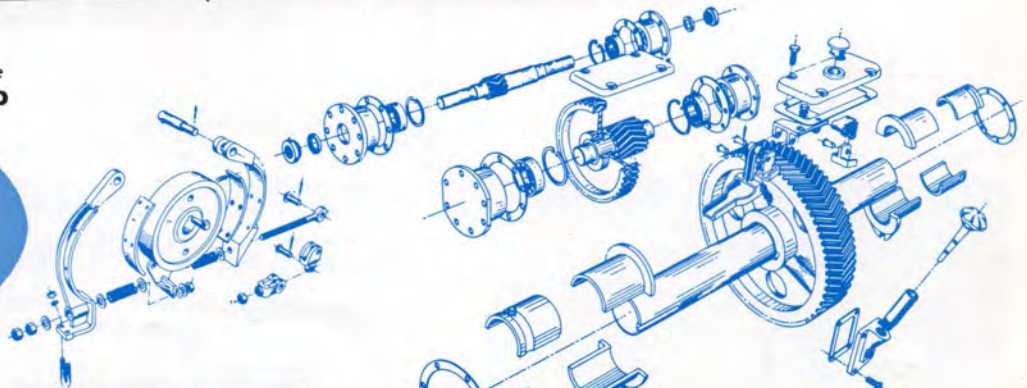
THERE ARE NO WEAK LINKS

in a **LUFKIN**
pumping unit...

EVERY PART, DOWN
TO THE LAST BOLT AND SCREW,
IS CONSERVATIVELY ENGINEERED
FOR MAXIMUM STRENGTH,
SIMPLICITY, AND ENDURANCE.



You Can Relax When Your Lease
Is **LUFKIN EQUIPPED**



LUFKIN

FOUNDRY & MACHINE COMPANY
LUFKIN, TEXAS